



We have a dedicated teaching team, led by enthusiastic teachers who continually seek out new and innovative ways for our children to learn. We encourage children to be interested in their own learning, through helping them set and assess their own targets. This way they learn to continually stretch themselves and realistically assess how they are doing; a valuable skill they can take with them throughout life.

Here, at Kirk Smeaton School, we have children who are encouraged, inspired and, quite simply, love being here to learn. Our rewards are to see each child flourish and grow in confidence throughout their time at our school.

We hope you will enjoy reading our prospectus, which will give you a feel for life in our school, and how we work together with parents to help all our children succeed.

Our vision at Kirk Smeaton CE VC Primary School is 'Let God's love shine as we care for each other and learn together.'

At Kirk Smeaton Church of England Primary School we believe that every child and adult is unique and has the right to be nurtured, guided by God.

This means that every child and adult who attends our school, regardless of their background is given the same opportunity, encouragement and inspiration to achieve their full potential and create resilience for their future. We nurture each other as individuals; helping us every day to develop emotionally, physically and spiritually.

"Let your light shine before others, so that they may see your good works and give glory to your Father in heaven" Matthew 5 v 16

Our core values are focused around SHINE and these are:

- **Safe**- we all need to safe and treat other safely.
- **Health**- we need to healthy in body and mind and help others when required.
- **Independent**- believe in yourself and you can move mountains.
- **Nurture**- we nurture everything around us, parents, children, wildlife, staff etc and we try to make a positive impact of things we feel strongly for.
- **Equal**- everyone matters and everyone is equal, treat everyone with respect.

They help us work in collaboration, understand others and their needs and help us all to make a positive contribute to life.

Mrs Hannah Cuddy
Head Teacher

Mr Harvie Palmer
Chair of Governors

Our Team

Our Staff Team

| | |
|-------------------------------|--|
| Headteacher | Mrs H Cuddy |
| Teaching Team | Miss R Bennett Miss M Roy Miss K Hallwood Miss R Simister |
| Admin Team | Mrs V Alty Mrs A Marner |
| Classroom Team | Mrs F Holt Miss L Harrison Mrs M Whittles Mrs A Greenaway Miss C Vale Mrs S Sheen |
| School Cooks | Mrs Kelly Helstrip |
| Music Teacher | Mrs A Smith |
| Lunch Time Supervisors | Mrs Sadie Sheen Miss Lyndsay Harrison Mrs Margaret Whittles Miss Cassie Whittles |
| Caretakers | LA contractors |

Our Governing Body

| | |
|----------------------------------|---|
| Chairperson | Mr Harvie Palmer (LA Governor) |
| Vice-Chair | Jordanna Proctor (Foundation Governor) |
| Parent Governors | Mrs Sally Hammond Mr Christian Brooks |
| Foundation Governors | Vacancy x 2 ----- |
| Local Authority Governors | Mr Harvie Palmer |
| Community Governors | Mrs Carol Ann Turner Vacancy x 1 |
| Staff Governor | Mrs Sadie Sheen Miss Katie Hallwood |
| Headteacher | Mrs Hannah Cuddy |

Our School Day

The School Day

The school day begins at 8:40am and ends at 3:10pm.

We offer a Breakfast Club from 7:30am, and an After School Club along with private providers offering various clubs from 3:10pm. Please see the school website for more information.

Snacks and Drinks

We promote a healthy diet and do not allow sweets on school premises.

As part of a government scheme, all children in Reception, Year 1, and Year 2 are provided with a fruit or vegetable snack during morning break.

Children in other year groups are encouraged to bring their own fruit or vegetables from home. All children should bring a labelled water bottle filled with fresh water (no juice or fizzy drinks) each day.

Lunchtimes

Lunchtime is a valued part of the school day, where children enjoy a healthy meal together. Our in-house cook prepares a fresh, two-course meal daily, including freshly baked bread. We promote a healthy and varied diet.

Further information and sample menus are available on the North Yorkshire website (see the 'Useful Contacts' section).

A high proportion of pupils choose school dinners, which can be paid for weekly or termly. Children who bring packed lunches are encouraged to include healthy, balanced options, such as:

- A sandwich
- A portion of vegetables (e.g. carrot sticks)
- A piece of fruit
- A yoghurt

Fresh water is available on every table.

All children, whether having school dinners or packed lunches, eat together in the school hall. Children in Reception to Year 2 are entitled to free school meals, and we strongly encourage families to take up this offer to support children in developing healthy eating habits.

Attendance and Holidays

Each half-day session begins with registration. If your child is absent, please inform the school via note, phone call, or in person. Unexplained absences must be recorded as unauthorised.

We are proud of our excellent attendance record and encourage families to take holidays only during school breaks. Term dates are shared in newsletters and published well in advance on our website.

School Life

School Uniform

Our school uniform helps promote a sense of belonging and pride in our school community. The standard uniform consists of:

- Red jumper or cardigan
- White or red polo shirt
- Grey trousers, shorts, skirt, or pinafore
- During the summer months, girls may wear red and white checked or striped dresses.
- All pupils must wear black, sensible school shoes suitable for both indoor and outdoor use (trainers are not permitted for daily wear).

Children are expected to bring a labelled bag containing a pair of trainers for outdoor PE and muddy playtimes. Children in Starfish Class should bring wellies instead of trainers, in a strong, labelled plastic bag that can be kept on their peg. From November to March, we ask that children wear trousers or tights to stay warm during the colder months.

We do not allow jewellery in school, with the exception of a wristwatch. Earrings are not permitted, and children wearing them will not be allowed to participate in PE.

PE Kit

Our PE kit consists of:

- Black close-fitting shorts
- Red t-shirt
- Black trainers (for indoor and outdoor use)
- In colder months, pupils will also need a black tracksuit for outdoor PE sessions.

Uniform items including sweatshirts, cardigans, polo shirts, and PE t-shirts embroidered with the school's name and emblem can be purchased from: www.school-shop.co.uk

Class Organisation

We have four main teaching classrooms: Starfish, Dolphins, Lions and Eagles. Currently Nursery and Reception are in our Foundation Unit, Starfish, with Miss Hallwood. Year 1 and 2 are in Dolphins with Miss Roy; Years 3 and 4 are in Lions with Miss Simister and Eagles class, our Years 5 and 6 children are with Miss Bennett. Classrooms also benefit from having experienced, well-trained classroom assistants.

Starfish Explorers

We have an afternoon nursery, the 'Starfish Explorers'. We take children the term after their 3rd Birthday. If you would like your child to attend, please contact the school office to secure your child's place. All children in Nursery are required to wear school uniform. We appreciate this may be difficult due to sizing, so we ask for a red polo neck t-shirt and grey or black trousers or leggings with a red jumper.

Kirk Smeaton Nursery runs in the afternoons from 12.30-3pm, Went Valley pre-school offers a morning and dinner session, together we are therefore able to provide a full day of nursery provision for your child. We ask that parents pre book the sessions that are needed.

Parent Partnership and communication

Working Together

Success in school is very much a partnership, and we do need your support. We are very keen to work with our parents to support our children. Our teaching staff are available at the end of every school day to talk with you about any concerns or successes you would like to share. If you need to discuss anything more fully with us, then we will arrange a mutually convenient time to talk with you. We have a formal parent's evenings during the Autumn and Spring Term. If, however, you have concerns about your child between please speak to us.

Newsletter and communication

We use ClassDojo across the school to share learning updates and important messages.

Arbor is used for managing trips, wraparound care, and official communications. We also send out fortnightly newsletters via email. Please share these with any family members who may be involved in drop-offs or pick-ups, as they often contain important information.

Homework

We know that children learn best through a partnership with home, and value the support that parents and carers give. All children are encouraged to read at home, with the support of their parents. Children also have a range of homework tasks each week. These include workbooks, spellings and IT games to consolidate their learning in mathematics and English. They also include more open-ended research projects that enable children to develop their own research skills and to choose how to display their findings. Homework diaries are used to record progress and to highlight any concerns or problems.

Pupil School Reports

In Autumn and Spring term we share targets that are specific to supporting children progress. In the Summer Term, we send home a comprehensive written report for each child, giving detailed information about what your child has achieved throughout the school year.

Church Services, Celebrations and School Performances

We hold regular School Services at our parish church, St Peter's, to celebrate key events such as Harvest Thanksgiving, Christmas, and Easter.

Throughout the year, we also host a variety of performances in our main school hall. These events are open to parents, families, and members of the community, and provide valuable opportunities for children to showcase their talents.

We actively encourage pupils to perform and speak publicly, helping them to build confidence, develop communication skills, and take pride in their achievements.

Indoor Facilities

School Hall

Our badminton-sized school hall has state of the art, PE and Sports Equipment. We use the hall during school time for our collective worship, indoor PE lessons, lunch times, drama, music and school events. This Hall is also home to a catering kitchen where school lunches are freshly prepared each day. Outside of school hours, this hall is available for hire and is regularly used for sports sessions, exercise classes and children's parties. For information on hiring this hall please contact the school office.

Community Room (The Smeatons Centre)

The Community Room is the home of our local Went Valley Pre-school, which meets every morning, 9 am till 12.30pm, during term time. More information on Went Valley Pre-School can be found in 'Our Partners' section of this prospectus. The community room is also available for hire and is regularly used by local groups. For information on hiring this hall please see our 'Useful Contacts' section at the end.

Outdoor Facilities

Playground

As well as the outdoor classrooms, which are used during playtimes, we also have a large playground and field area. In this area there is a playing field and a hard-surfaced pitch. We have a wooden adventure trail equipment, tyre park, exercise park, play equipment and tree seats around the many trees in our playground and a 'quiet area' where children can sit quietly. We also have den making materials and other, varied items of play equipment in our playtime shed to ensure children are occupied and enjoy playtimes playing with their friends.

Wild Garden and Vegetable Garden

In our main playground, we also have a small wildlife garden and vegetable plot, complete with wormery and compost heap. Our pupils, to enhance their understanding of food and the world around us, look after this area, and we are very grateful to a number of parent volunteers who come and help us with this. Over recent years, the children have been able to grow, prepare and eat the produce that is harvested.

Accessibility for Disabled People

Our Access Plan Policy is aimed at promoting Disability Equality in keeping with the Disability Discrimination Act (DDA) 1995. Priority is given to removing barriers to make sure everyone has equal access to all our resources and facilities. Where needed, we work with individual families to address their needs.

Children's Learning

High Standards in All We Do

Our Curriculum at Kirk Smeaton Church of England Primary School has been especially designed to help us consider the principles of progression and continuity without losing sight of creativity. Following the breakdown of the key skills structure outlined in the National Curriculum, it has helped us to move each pupil's learning forward and guarantee that they are always achieving to his or her full potential.

Regular Assessment

We operate a structured assessment agenda backed up by sound analysis of progress. Children are consistently assessed each term and we find that this structure enables the teaching staff to deliver a personalised curriculum for all our pupils.

Personalised Learning

An important part of learning is the ability of children to take ownership of their own learning. Lessons have clear objectives, and children are trained to assess how well they have done and to identify what they need to do next to improve. These skills are gradually built up as children move through school. We find that when they understand their learning needs, children are then able to concentrate on the best ways of making personal progress. Targets are sent to parents three times a year. All children are encouraged to know their targets they are working towards. For children that have additional needs, they are supported by a termly target plan meeting where SENCO, child and parents are present to reinforce targets to all parties.

Our Commitment to Each and Every Child

Children with Special Needs

All children are unique, and have many talents to celebrate, but may also have special needs requiring understanding and support. Parental partnerships are very important to us, and where a child has specific needs, we work very closely with them and their families.

In the first instance, children who need extra help are supported within the curriculum of the classroom. Should this not lead to the expected progress, then an individual plan is set up for the child aiming to support these specific needs.

We put great emphasis on using the expertise of other professionals where appropriate, such as medical professionals and educational psychologists. In cases of more severe difficulty the Local Education Office may offer further support. Parents may like to know that we have a Special Needs Co-ordinator and a Special Needs Governor who are available to support in any way they can.

Gifted and Talented Children

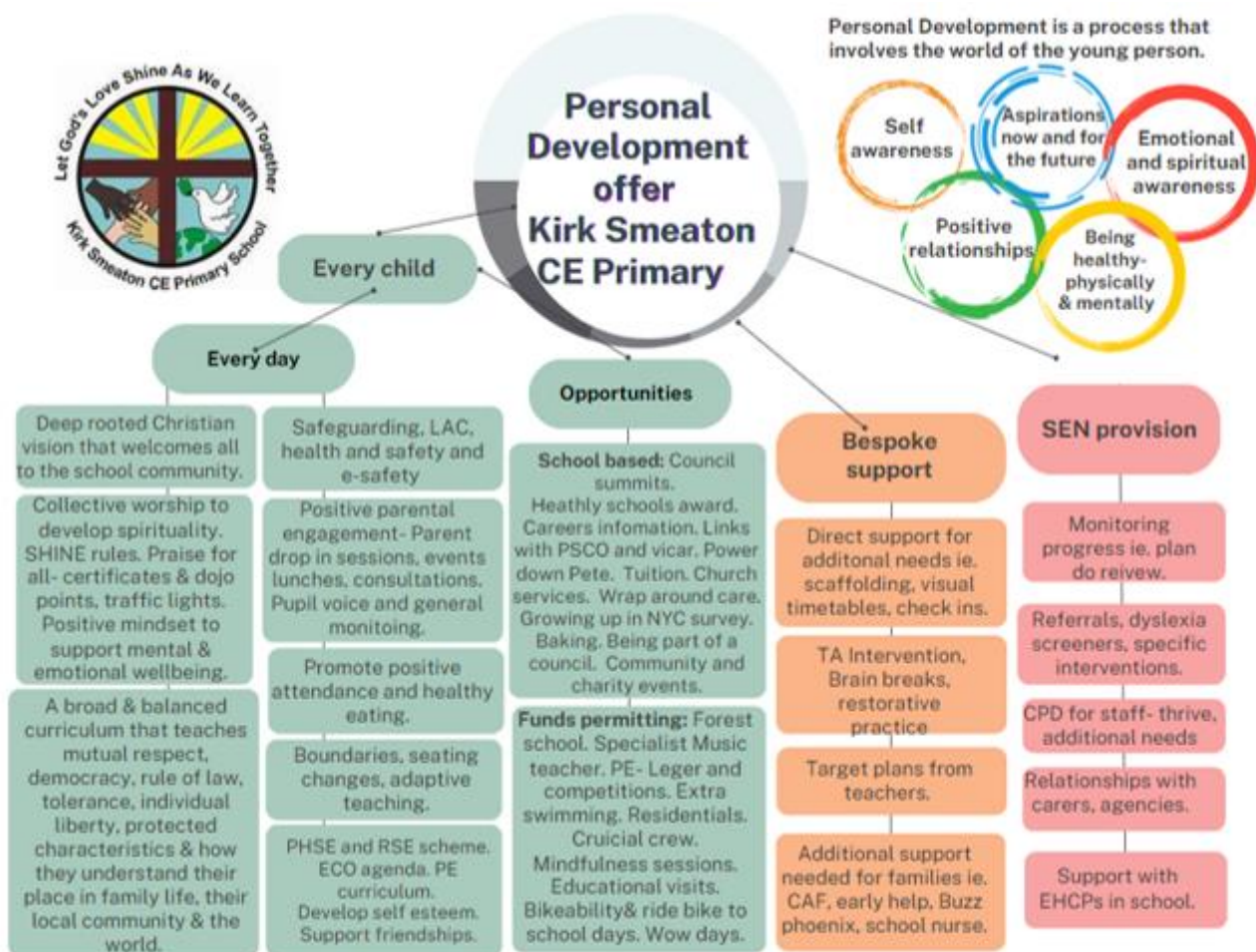
Gifted children also have their own unique needs. Our broad curriculum provides opportunities for children to develop mastery in the arts and sport, as well as 'academic' subjects, and we celebrate and nurture all of these talents. As we have different age groups in the same class,

[Let God's love shine as we care for each other and learn together.](#)

we can offer children extra challenge by giving them opportunities to work with older pupils, whilst maintaining their social links with their own age group. We also offer individual extension activities to enable children to work towards their full potential.

Personal Development

Please see the schools Personal Development offer.



Music

All children are taught music as part of the curriculum. Instrumental tuition is also available through the Music Service and Mrs A Smith and there is an extra charge for this.

Sports, PE and Fitness

We promote a healthy lifestyle by ensuring that all children have at least two hours of physical exercise each week. Children are encouraged to review their performance and identify ways of improving both their skills and their fitness. With the support of our local sports development team our children receive expert coaching in PE and sport.

Children in Y3-6 will access swimming at either Adwick or Askern pool. We usually take the children in alternate years, which means they have two sets of 15 sessions of swimming in KS2.

School Day and Residential Trips

Let God's love shine as we care for each other and learn together.

We have day trips throughout the school year, to support topics, and enhance learning. Children in Y3/4 have the opportunity to camp in the school field and develop bush craft skills for a day. Y5/6 children have the opportunity to attend a residential.

Brockadale Wood

We are very fortunate to have the Brockadale Nature reserve next to school. Children have the opportunity to go into the woods each half term to learn a number of skills such as pond dipping, tree and insect identification, investigational skills.

Councils and Leadership

Children are encouraged to take an active role in school life by participating in one of our pupil councils. These include:

- Courageous Advocacy and Equality Council
 - Eco Council
 - Anti-Bullying Council
 - Sports and Safety Council
 - Wellbeing Council
 - Sports leaders Y5/6
-

These councils give pupils a voice and the opportunity to make a positive impact within the school and wider community. Members regularly lead collective worship, share updates, and offer support to their peers.

Being a Church School

Religious Education

As a Church of England school, RE is a central part of our curriculum. It includes teaching about the Christian faith, and also introduces children to the ways in which other world faiths are similar and different to Christianity. Our work both gives information about religions, and helps children to appreciate how belonging to a religious faith group affects the way we live our lives.

Religious education and collective worship are considered to be an important part of school life, and we actively encourage all children to take part. As a Church of England School we have collective worship on a regular basis

Supporting Our Children

Discipline and Our Shine Rules

Our children are encouraged to think about rights and responsibilities. Each year pupils agree a code of conduct that enables everyone to be safe and happy. This forms the expectations for behaviour in school, and contributes to the supportive family atmosphere that we value. Where a child's behaviour repeatedly causes upset or risk to others, we work with parents and the child to overcome the problem. Specialist support will be accessed if appropriate, and, as in all schools, the head teacher reserves the right to exclude pupils in very serious cases.

Sex and Relationship Education

We want our children to make lasting and supportive relationships throughout their lives. We explore the stages of life at appropriate levels in our school. We study the life cycles of plants and animals and our development from birth. From Nursery- Y6 we talk about sex and relationships, please see our school website for the content of these discussions.

Safeguarding

Our first priority is to work in partnership with parents to ensure the safety and well-being of every child.

However, there may be occasions when concerns about a child's welfare require us to consult with external agencies before contacting parents or carers. If other agencies share our concerns, they will determine the most appropriate course of action, including how and when to inform families. Please note that decisions regarding parental notification are made by Social Care and the Police, not by the school. If you would like more information about our safeguarding procedures, please speak to the Headteacher.

Joining Our School

Finding Out More

Choosing a school for your child is a very important decision, so please visit us to meet staff and the other children, and to see for yourself what the school has to offer. At the moment, approximately 50% of the children at this school are out of our direct catchment area, which means that our school is becoming an increasingly popular school. Please phone us if you would like to arrange an appointment. Also, if you would like to speak to one of our school governors, or parents of children in the school, we can also arrange this for you.

Requesting a Place in School for your Child.

If you would like your child to join our school, please contact us in the school office. We will then provide the support you need to apply for a place through your home council. Contact details are in our 'Useful Links' section for North Yorkshire admissions. The School Governors follow the North Yorkshire Admission Policy, and we can provide further details of this on request. Children can start full time school during the September of the school year in which they are five. Applications for these places are administered through North Yorkshire Council during November and December of the previous year.

[Let God's love shine as we care for each other and learn together.](#)

Sometimes parents wish their child to transfer schools, perhaps through moving house. Application forms can be obtained from North Yorkshire Council.

Parents with younger children may wish to contact our partners, the Went Valley Pre School, which offers places for children from the age of two.

Applications for Children who have a Disability

If your child has a disability or medical need, we would be pleased to discuss how we can support and include him/her in our school community. We will work in partnership with parents and the Local Authority to ensure that any barriers to learning are minimised or overcome, and your child is able to enjoy the opportunities on offer as fully as possible.

We regularly review our curriculum and teaching methods to ensure that it meets the needs of all our children.

Kirk Smeaton CE Primary School Home–School Agreement

Updated May 26

At Kirk Smeaton CE Primary School, we believe that children thrive when school, home and the wider community work together. This agreement sets out the shared commitments that help every child feel safe, valued and able to achieve their full potential.

Our School Commitment

We will:

- Treat all children fairly, with kindness, dignity and respect.
- Provide high quality teaching through a rich, engaging and inclusive curriculum.
- Support and challenge every child to achieve their very best.
- Share with children how they are progressing and what they need to do next.
- Promote spiritual development and encourage children to reflect, care and show compassion.
- Foster independence, responsibility and self-esteem, recognising each child as unique and valued.
- Model positive behaviour, politeness and respect for all.
- Help children understand their role in the wider community and the world.
- Communicate clearly with parents about learning, wellbeing and school life.
- Listen openly to concerns and work together to resolve issues.
- Welcome parents into school life and provide opportunities for involvement.
- Start and finish the school day punctually.
- Ensure all relevant policies are available and followed.
- Teach children how to stay safe online and protect themselves from bullying or misuse of technology.

Pupil Commitment

I will try to:

- Show kindness, respect and consideration to everyone.
- Be ready to learn, work hard and always try my best.
- Tell the truth and take responsibility for my actions.
- Listen carefully and follow instructions.
- Stand up for what is right and think before I act or speak.
- Allow others to learn without disruption.
- Speak politely and behave sensibly.
- Care for others and help make our school a happy place.
- Look after my belongings and respect other people's property.
- Wear the correct school uniform and keep myself smart.
- Remove earrings and piercings during the school day.
- Set a good example to others.
- Follow the school, classroom and playground rules.
- Complete homework on time and ask for help if I need it.
- Talk to an adult if I am worried about anything at school or at home.

Parent/Carer Commitment

I will aim to:

- Ensure my child attends school every day, on time and ready to learn.
- Avoid taking my child out of school during term time unless absolutely necessary.

[Let God's love shine as we care for each other and learn together.](#)

- Ensure my child wears the correct uniform and has their PE kit in school.
- Collect my child punctually and inform school of any changes to pick up arrangements.
- Inform school of any issues that may affect my child's learning or behaviour.
- Make sure my child has the items they need (water bottle, coat, sun protection when needed).
- Encourage good behaviour, politeness and respect for others.
- Support my child's learning at home, including homework.
- Support the school's ethos, values and ways of working.
- Meet with staff when needed to discuss learning or behaviour.
- Follow the parent behaviour policy and communicate respectfully with staff and pupils.
- Attend parents' meetings and support school events where possible.
- Follow school guidance on mobile devices and social media.
- Check school communications regularly (email, Dojo, Arbor).
- Park safely and respectfully around school.

Governing Body Commitment

Our governors will:

- Ensure school policies promote safety, wellbeing and high quality education for all pupils.
- Monitor the school's performance and support leaders in raising standards.
- Ensure funding is used effectively to support learning and school improvement.
- Visit school regularly and engage with staff, pupils and parents.